

# Housing and Health

James Barber

Graduate Management Trainee, Public Health

Bethan Clemence

Health Improvement Lead Planning & Place, Public Health

# Project Themes

- Housing quality (the condition of housing)
- Housing availability (homelessness and access to accommodation)

# Housing Quality

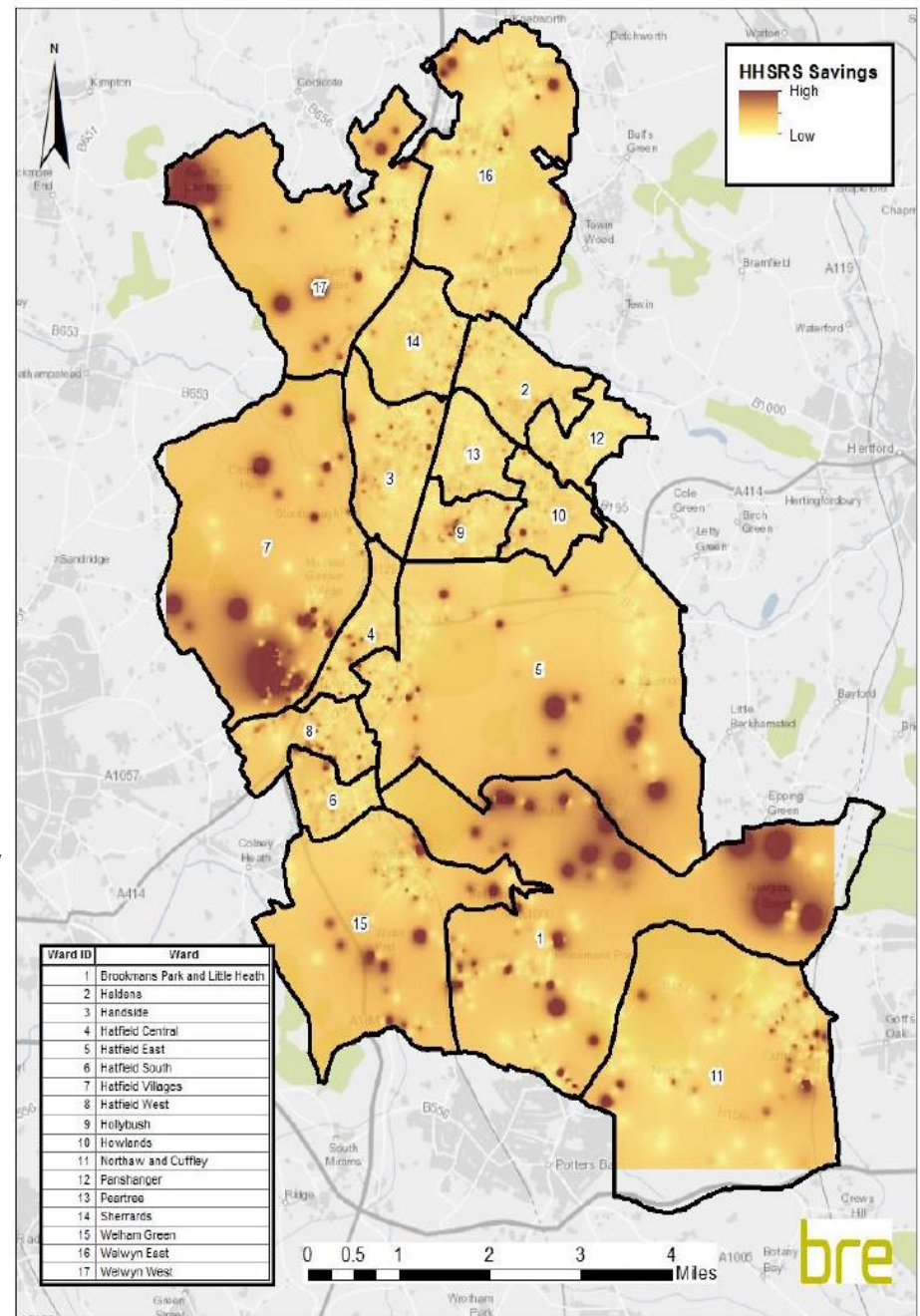
- Evidence of poor quality housing

## Local services:

- District & Borough Council housing enforcement
- Herts Healthy Homes
- Fire Home Safety Visits/  
Safe and Well visits

## Issues

- Resources
- Referrals/data sharing



Map: Hazardous housing in Welwyn-Hatfield

# Housing Availability

- Rise in levels of homelessness in Herts since 2010/11
- Hospital discharge
- Adults with complex needs
- Access to emergency night shelter

# WHAT NEXT?

[www.hertsdirect.org](http://www.hertsdirect.org)





# Housing and Health on a Page



An overview of the main themes and sub-themes identified around housing and health, including the key stakeholders, potential tasks and forums for partnership working.

## Theme: Preventing harm from hazards in the home

*Hazards in the home (such as excess cold, trip hazards, fire risks etc.) are associated with a number of negative health outcomes relevant to the Public Health, NHS and Adult Social Care Outcomes Frameworks*

### a) Private rented housing enforcement and regulation

Stakeholders: Public Health, District & Borough Councils, Community Protection, NHS

### b) Reducing the impact of hazards in the homes of vulnerable people

Stakeholders: Public Health, District & Borough Councils, Community Protection, Health & Community Services, Housing Associations, NHS

#### Potential Tasks

- Develop JSNA and housing intelligence
- Increase referrals into existing home improvement services
- Encourage partnership working on the development of Safe and Well Visits
- Explore business case for developing home improvement services (such as around thermal efficiency)

#### Potential forums for partnership working

1. Public Health Board
2. Health & Wellbeing Board
3. Herts Heads of Housing Group
4. Housing Associations Chief Execs Meeting
5. Herts and Beds Housing Group

## Theme: Addressing the impact of homelessness and supporting access to accommodation

*There are negative health outcomes associated with the absence of secure accommodation. Homeless people are more likely to have poor health, and place a disproportionate burden on health providers*

### a) Homeless prevention and support to access accommodation

Stakeholders: Public Health, District & Borough Councils, Housing Associations, NHS

### b) Housing services for adults with complex needs

Stakeholders: Public Health, District & Borough Councils, Health & Community Services, Housing Associations, NHS

#### Potential Tasks

- Improve hospital discharge coordination for patients needing housing support
- Develop multi-agency support for adults with complex needs
- Improve access to emergency night shelter
- Explore the business cases for protecting or expanding existing homeless prevention services

#### Potential forums for partnership working

1. Public Health Board
2. Health & Wellbeing Board
3. Herts Heads of Housing Group

## Theme: Providing suitable housing for people with disabilities/older people

*The provision of suitable accommodation can promote health & wellbeing and prevent the need for more intensive support*

### a) The development of specialist housing

Stakeholders: Public Health, District & Borough Councils, Health & Community Services, NHS

### b) Home adaptations and alterations

Stakeholders: District & Borough Councils, Community Protection, Health & Community Services, Housing Associations, NHS

### c) Provision of home-based health and social care services

Stakeholders: Health and Community Services, Housing Associations, NHS, District & Borough Councils

#### Potential Tasks

- Formalise structure between housing providers, health and social care
- Build on existing projects and partnerships
- Develop strategic approach to planning and development
- Develop community networks/leadership
- Commission innovative accommodation

#### Potential forums for partnership working

1. Dual District Accommodation Boards
2. Housing Associations Chief Execs Meeting
3. Health and Wellbeing Board

**thank you**

[www.hertsdirect.org](http://www.hertsdirect.org)



